

ILL: 87915642

Call QH512 .B56 2003x
Number:
Location:
Maxcost: \$80IFM

DateReq: 2/28/2012 Yes
Date Rec: 3/1/2012 No
Borrower: WAU Conditional

Request Type:

Source: ILLiad

LenderString: CUZ,*SRS,VLW,UBY,AAA

OCLC Number: 53950131

Affiliation: JAPAN ARL PROJECT; GWLA.

Staff Email: interlib@u.washington.edu Journal Articles: First Choice: ODYSSEY. Second Choice: ARIEL. Third Cho

Billing Notes: PLEASE BILL IFM (we can also pay with Credit Card) - Please "Conditional" with questions.

Title: Biomineralization /

Uniform

Title:

Author:

Edition:

Imprint: Washington, DC : Mineralogical Society of America, c2003.

Article: Weiner, S: An Overview of Biomineralization Processes and the Problem of the Vital Effect

Vol: 54

No.:

Pages: 1-29

Date: 2003

Dissertation:

Verified: <TN:794672> : <ODYSSEY:128.95.104.44/ILL> OCLC 9780939950669

Borrowing

Notes:

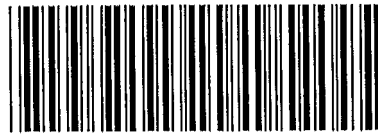
ShipTo: University of Washington Libraries/ILL - Suzzallo Library /4000 15th Ave NE (UPS ONLY)/Box 352900 (US MAIL)/Seattle, WA 98195-2900

E-delivery

Addr: ARIEL 128.95.217.16 (v3.4) Phone: 206-543-1899

Ship Via: ARIEL/LIB RATE

ShipVia: ARIEL/LIB RA



ILL: 87915642

Lender: SRS

NeedBy: 3/29/2012

Borrower: WAU

Return To:

Resource Sharing Services
Bailey Library
Slippery Rock University
Slippery Rock, PA 16057

Req Date: 2/28/2012

OCLC #: 53950131

Patron: <TN:794672> : <ODYSSEY:128.95.104.44/ILL>

Author:

Title: Biomineralization /

Article: Weiner, S: An Overview of Biomineralization Processes and the Problem of the Vital Effect

Vol: 54

No.:

Date: 2003

Pages: 1-29

Verified: <TN:794672> : <ODYSSEY:128.95.104.44/

Maxcost: \$80IFM

Due Date:

Lending Notes:

Bor Notes:

Ship To:

University of Washington Libraries

ILL - Suzzallo Library

4000 15th Ave NE (UPS ONLY)

Box 352900 (US MAIL)

Seattle, WA 98195-2900

1 An Overview of Biomineralization Processes and the Problem of the Vital Effect

Steve Weiner

*Department of Structural Biology
Weizmann Institute of Science
76100 Rehovot Israel*

Patricia M. Dove

*Department of GeoSciences
Virginia Tech
Blacksburg, Virginia 24061 U.S.A.*

"Biomineralization links soft organic tissues, which are compositionally akin to the atmosphere and oceans, with the hard materials of the solid Earth. It provides organisms with skeletons and shells while they are alive, and when they die these are deposited as sediment in environments from river plains to the deep ocean floor. It is also these hard, resistant products of life which are mainly responsible for the Earth's fossil record. Consequently, biomineralization involves biologists, chemists, and geologists in interdisciplinary studies at one of the interfaces between Earth and life."

(Leadbeater and Riding 1986)

INTRODUCTION

Biomineralization refers to the processes by which organisms form minerals. The control exerted by many organisms over mineral formation distinguishes these processes from abiotic mineralization. The latter was the primary focus of earth scientists over the last century, but the emergence of biogeochemistry and the urgency of understanding the past and future evolution of the Earth are moving biological mineralization to the forefront of various fields of science, including the earth sciences.

The growth in biogeochemistry has led to a number of new exciting research areas where the distinctions between the biological, chemical, and earth sciences disciplines melt away. Of the wonderful topics that are receiving renewed attention, the study of biomineral formation is perhaps the most fascinating. Truly at the interface of earth and life, biomineralization is a discipline that is certain to see major advancements as a new generation of scientists brings cross-disciplinary training and new experimental and computational methods to the most daunting problems. It is, however, by no means a new field. The first book on biomineralization was published in 1924 in German by W.J. Schmidt (Schmidt 1924), and the subject has continued to intrigue a dedicated community of scientists for many years. Until the early 1980s the field was known as "calcification," reflecting the predominance of biologically formed calcium-containing minerals. As more and more biogenic minerals were discovered that contained other cations, the field became known as "biomineralization." An invaluable knowledge base has been established in a literature that is found at virtually every call number in the scientific library. With styles as varied as the biominerals themselves, the initiate will find that a number of authors have extensively assessed the state of knowledge in texts (e.g., Lowenstam and Weiner 1989; Simkiss and Wilbur 1989; Mann 2001) and specialized reviews (e.g., Westbroek 1983; Leadbeater and Riding 1986; Crick 1989; Bäuerlein 2000).

With this RiMG review, the foremost goal of the authors is to create a volume focused upon topics essential for scientists, and in particular earth scientists, entering the field. With this objective in mind, our approach is first to establish relevant aspects of molecular biology and protein chemistry (e.g., Evans 2003) and then the thermodynamic principles necessary for mineralization to occur (e.g., De Yoreo and Vekilov 2003). Equipped with this toolbox of essentials and Nature as our guide, we examine in some detail six major biomineralization processes. As much as possible, we attempt to de-emphasize specifics unique to some organisms and, instead focus on the major mineralizing strategies. Fundamental to this approach is an evolutionary perspective of the field. It is noteworthy that underlying mechanisms for controlling the biomineralization processes appear to be used again and again by members of many phyla.

The last part of this volume examines views of how biomineralization processes have been employed by organisms over Earth history and their intertwined relations to earth environments. By considering the impacts of these relations upon global biogeochemical cycles, studying the temporal and geochemical results of mineral-sequestering activities, and asking critical questions about the topic, we can arrive at a deeper understanding of biological mineralization and of life on earth.

This chapter

This introductory chapter is divided into two main sections: an overview of basic biomineralization strategies and processes and a discussion of how understanding more about biomineralization mechanisms may shed light on the manner in which environmental signals may or may not be embedded in the minerals produced by organisms.

Despite the fact that the hallmark of biomineralization is the control that organisms exert over the mineralization process, it has been noted by earth scientists for the last 50 years that biologically produced minerals often contain embedded within their compositions, signatures that reflect the external environment in which the animal lived. Thus many geochemists have focused on extracting the signal for past seawater temperatures, salinities, productivities, extent of sea water saturation, and more. The task has not been an easy one! In many cases, the control processes either completely eliminate the signals or shift them. Sorting out this so-called vital effect (Urey 1951) or physiological effect (Epstein et al. 1951) from the environmental signal remains a problem yet to be solved. In the second part of this chapter, we will discuss some of the principles of mineralization in terms of the vital effect—a subject of much current interest to the earth sciences community.

OVERVIEW OF BIOMINERALS

Over the last 3500 Myr or so, first prokaryotes and then eukaryotes developed the ability to form minerals. At the end of the Precambrian, and in particular at the base of the Cambrian some 540 Myr ago, organisms from many different phyla evolved the ability to form many of the 64 different minerals known to date (e.g., Knoll 2003). While the names and corresponding chemical compositions of minerals produced by organisms are given in Table 1 (Weiner and Addadi 2002), this list is unlikely to be complete, as new biologically produced minerals continue to be discovered.

What is a biomineral?

The term biomineral refers not only to a mineral produced by organisms, but also to the fact that almost all of these mineralized products are composite materials comprised of both mineral and organic components. Furthermore, having formed under controlled conditions, biomineral phases often have properties such as shape, size, crystallinity, isotopic and trace

element compositions quite unlike its inorganically formed counterpart. The term “biomineral” reflects all this complexity. Figure 1 illustrates this by comparing part of a single calcite crystal formed by an echinoderm to synthetic single crystals of calcite.

Some comments on the major groups of biominerals

As indicated by Table 1, calcium is the cation of choice for most organisms. The calcium-bearing minerals comprise about 50% of known biominerals (Lowenstam and Weiner 1989). This comes as no surprise because calcium fulfills many fundamental functions in cellular metabolism (Lowenstam and Margulis 1980; Simkiss and Wilbur 1989; Berridge et al. 1998). This dominance of calcium-bearing minerals is what led to the widespread usage of the term calcification. However, reader beware! The term refers to the formation of calcium-containing phosphate, carbonate, oxalate and other mineral types. Table 1 also shows that about 25% of the biominerals are amorphous in that they do not diffract X-rays. Amorphous silica is commonly formed by organisms and has been investigated extensively (see Perry 2003). Another well studied biogenic amorphous mineral, is the granules of amorphous hydrous iron phosphate deposited as granules in the skin of the holothurian, *Molpadia* (Lowenstam and Rossman 1975), shown in Figure 2. Among these amorphous minerals are those that have the same chemical composition, but differ by degree of short range order (Addadi et al. 2003). Many of these have been discovered only in the last few years; hence they present a fascinating new area of research.

The calcium carbonate minerals are the most abundant biogenic minerals, both in terms of the quantities produced and their widespread distribution among many different taxa (Lowenstam and Weiner 1989). Of the eight known polymorphs of calcium carbonate, seven are crystalline and one is amorphous. Three of the polymorphs—calcite, aragonite and vaterite—are pure calcium carbonate, while two—monohydrocalcite and the stable forms of amorphous calcium carbonate—contain one water molecule per calcium carbonate (Addadi et al. 2003). Surprisingly, the transient forms of amorphous calcium carbonate do not contain water (Addadi et al. 2003). One of the major challenges in the field of biomineralization is to understand the mechanism(s) by which biological systems determine which polymorph will precipitate. This is genetically controlled and is almost always achieved with 100% fidelity.

Phosphates comprise about 25% of the biogenic mineral types. Except for struvite and brushite, most phosphate minerals are produced by controlled mineralization (see subsequent section). The most abundantly produced phosphate mineral is carbonated hydroxyapatite, also called dahllite (Lowenstam and Weiner 1989). It is the mineral present in vertebrate bones and teeth, as well as in the shells of inarticulate brachiopods. Note that the non-carbonated member of this family, hydroxyapatite, is not known to be formed biologically. Biogenic carbonate apatite crystals are usually plate-shaped and are exceedingly small (2–4 nm thick and some tens of nanometers long and wide; Weiner and Price 1986). It is interesting to note that synthetic carbonated hydroxyapatites precipitated under conditions similar to those found in vertebrate physiology are also plate-shaped and small (Moradian-Oldak et al. 1990). Therefore it is not the biological environment in which they form that gives them the plate shape which is most unusual for a mineral that crystallizes in the hexagonal crystallographic system. The fact that the biologically formed crystals are so small generally indicates that they are also rather unstable; hence they are typically more soluble than hydroxyapatite (Stumm 1992). They are also very difficult to characterize structurally because their high surface/volume results in many atoms being perturbed. With new spectroscopic applications designed to overcome the problems of working with small particles and the difficulties associated with hydrous phases (Waychunas 2001), current views of phosphate biomineral compositions and structures could still undergo significant revision.

Table 1. The names and chemical compositions of minerals produced by biologically induced and controlled mineralization processes

<i>Name</i>	<i>Formula</i>
<u>Carbonates</u>	
Calcite	CaCO ₃
Mg-calcite	(Mg _x Ca _{1-x})CO ₃
Aragonite	CaCO ₃
Vaterite	CaCO ₃
Monohydrocalcite	CaCO ₃ ·H ₂ O
Protodolomite	CaMg(CO ₃) ₂
Hydrocerussite	Pb ₃ (CO ₃) ₂ (OH) ₂
Amorphous Calcium Carbonate (at least 5 forms)	CaCO ₃ ·H ₂ O or CaCO ₃
<u>Phosphates</u>	
Octacalcium phosphate	Ca ₈ H ₂ (PO ₄) ₆
Brushite	CaHPO ₄ ·2H ₂ O
Francolite	Ca ₁₀ (PO ₄) ₆ F ₂
Carbonated-hydroxylapatite (dahllite)	Ca ₅ (PO ₄ ,CO ₃) ₃ (OH)
Whitlockite	Ca ₁₈ H ₂ (Mg,Fe) ₂ ⁺² (PO ₄) ₁₄
Struvite	Mg(NH ₄)(PO ₄)·6H ₂ O
Vivianite	Fe ₃ ⁺² (PO ₄) ₂ ·8H ₂ O
Amorphous Calcium Phosphate (at least 6 forms)	variable
Amorphous Calcium Pyrophosphate	Ca ₂ P ₂ O ₇ ·2H ₂ O
<u>Sulfates</u>	
Gypsum	CaSO ₄ ·2H ₂ O
Barite	BaSO ₄
Celestite	SrSO ₄
Jarosite	KFe ₃ ⁺³ (SO ₄) ₂ (OH) ₆
<u>Sulfides</u>	
Pyrite	FeS ₂
Hydrotroilite	FeS· <i>n</i> H ₂ O
Sphalerite	ZnS
Wurtzite	ZnS
Galena	PbS
Greigite	Fe ₃ S ₄
Mackinawite	(Fe,Ni) ₉ S ₈
Amorphous Pyrrhotite	Fe _{1-x} S (x = 0-0.17)
Acanthite	Ag ₂ S
<u>Arsenates</u>	
Orpiment	As ₂ S ₃
<u>Hydrated Silica</u>	
Amorphous Silica	SiO ₂ · <i>n</i> H ₂ O
<u>Chlorides</u>	
Atacamite	Cu ₂ Cl(OH) ₃
<u>Fluorides</u>	
Fluorite	CaF ₂
Hieratite	K ₂ SiF ₆
<u>Metals</u>	
Sulfur	S

Table 1 continued.

<i>Name</i>	<i>Formula</i>
<u>Oxides</u>	
Magnetite	Fe ₃ O ₄
Amorphous Ilmenite	Fe ⁺² TiO ₃
Amorphous Iron Oxide	Fe ₂ O ₃
Amorphous Manganese Oxide	Mn ₃ O ₄
<u>Hydroxides & Hydrated Oxides</u>	
Goethite	α-FeOOH
Lepidocrocite	γ-FeOOH
Ferrihydrite	5Fe ₂ O ₃ ·9H ₂ O
Todorokite	(Mn ⁺² CaMg)Mn ₃ ⁺⁴ O ₇ ·H ₂ O
Birnessite	Na ₄ Mn ₁₄ O ₂₇ ·9H ₂ O
<u>Organic Crystals*</u>	
Earlandite	Ca ₃ (C ₆ H ₅ O ₂) ₂ ·4H ₂ O
Whewellite	CaC ₂ O ₄ ·H ₂ O
Weddelite	CaC ₂ O ₄ ·(2+X)H ₂ O (X<0.5)
Glushinskite	MgC ₂ O ₄ ·4H ₂ O
Manganese Oxalate (unnamed)	Mn ₂ C ₂ O ₄ ·2H ₂ O
Sodium urate	C ₅ H ₃ N ₄ NaO ₃
Uric Acid	C ₅ H ₄ N ₄ O ₃
Ca tartrate	C ₄ H ₄ CaO ₆
Ca malate	C ₄ H ₄ CaO ₅
Paraffin Hydrocarbon	
Guanine	C ₅ H ₃ (NH ₂)N ₄ O

* by the convention of Lowenstam & Weiner (1989)

References: Lowenstam & Weiner (1989), Simkiss & Wilbur (1989), Mann (2001), Weiner and Addadi (2002)

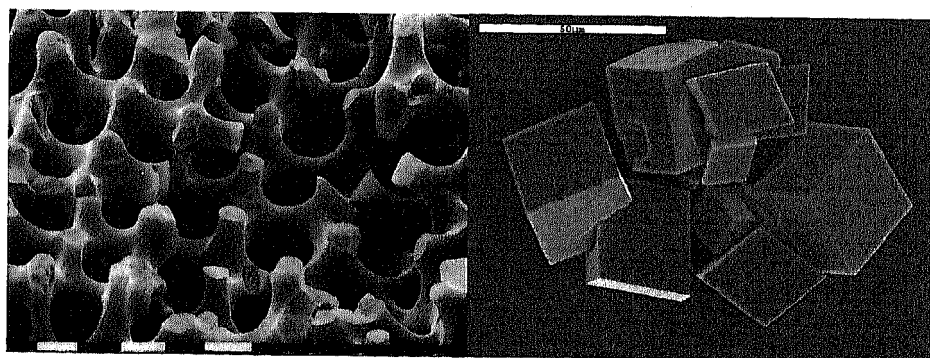


Figure 1. Comparison of calcite single crystals: (left) stereom of echinoderm and (right) synthetically produced rhombohedral forms.

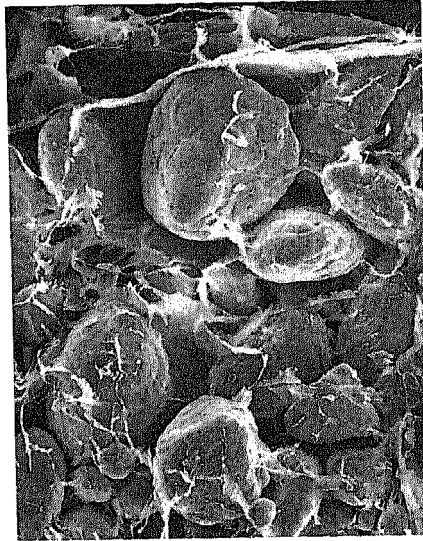


Figure 2. Granules of amorphous hydrous iron phosphate deposited in the skin of the holothurian, *Molpadia*. (Micrograph from the collection of the late H.A. Lowenstam). Diameter of largest granule about 200 microns.

It is noteworthy that each of the mineral classes includes one or more phases that contain water and/or hydroxyl groups (Table 1). These hydrated forms comprise about 60% of the biogenic minerals. In particular, all of the silica biominerals reported to date are hydrated (e.g., Lowenstam and Weiner 1989), and there is mounting evidence that many crystalline carbonate biominerals first form as hydrated phases (Beniash et al. 1997, 1999; Weiss et al. 2002; Addadi et al. 2003). The abundance of hydrated biominerals is no accident. Hydrated phases are favored over anhydrous counterparts by significantly lowering energetic barriers to nucleation and growth from aqueous solution (e.g., Stumm 1992). Organisms are metabolic misers; thus they use the Ostwald-Lussac rule to their advantage by favoring the precipitation of the lowest energy phases (Nancollas 1982).

The iron biominerals are not readily evaluated by mineral class because they have significant occurrences as oxides, hydroxides, and sulfides (Bazylinski and Moskovitz 1997; Konhauser 1997). Some iron sulfate and phosphate minerals are also reported (Konhauser 1998). When one considers the abundance of iron in the biosphere (particularly in the early earth) versus the very low solubility of most iron-bearing minerals, one expects this diversity and abundance. The iron biominerals are of particular significance because they comprise approximately 40% of all minerals formed by organisms (Lowenstam 1986; Bazylinski and Frankel 2003), and magnetite formation is believed to be the most ancient matrix-mediated biomineralizing system. As such, Kirschvink and Hagadorn (2000) have suggested that magnetic biominerals, and iron minerals in general, could contain clues to other aspects of controlled mineralization.

Table 1 also contains a group of so-called "organic" minerals. Despite the contradiction in terms, these are crystalline phases formed by organisms probably by the same underlying strategies used for "normal" mineral formation. We suspect that many of these minerals remain to be discovered, and exploring the functions they perform will be fascinating. Even DNA is known to transform into crystalline phases in bacteria subjected to stress (Minsky et al. 2002). The dense packing of the crystal provides protection from damage during periods of dormancy when much of the metabolic processes are nearly shut down.

Unique character of minerals formed by biological systems

Biomaterials meet the criteria for being true minerals, but they can also possess other characteristics that distinguish them from their inorganically produced counterparts. The most obvious trait is that biogenic minerals have unusual external morphologies. It is perhaps the intricacy and diversity of bio-originated structures (e.g., Figure 3) that first attracts mineralogically-inclined persons into the field of biomineralization. For example, beautiful single crystals that express an unusual set of faces are found in magnetite (see Bazylinski and Frankel 2003). The SEM images presented throughout this volume capture the imagination by illustrating the astonishing ability of Nature to grow minerals of a complexity that is (for now) an impossible task for humankind to replicate! Implicit in this complexity is the intriguing ability of organisms to impose a “handedness” upon the external morphology of biomaterials. Good examples are found from the microscopic (magnetosomes and coccoliths) to macroscopic (Nautilus) organisms. The question of how organisms use molecules to transfer chiral information to crystalline surfaces and thus induce asymmetrical biomaterial structures is an on going one (e.g., Addadi and Weiner 2001; Orme 2001; De Yoreo and Vekilov 2003). Remarkably, genetic regulation runs the controlled-mineralization “program” to form biomaterials with unusual morphologies using great fidelity again and again.

A second characteristic of biomaterials is that many are actually composites or agglomerations of crystals separated by organic material. In many organisms, they exist as small bodies distributed within a complex framework of macromolecular frameworks such as collagen or chitin (Addadi et al. 2003). X-ray diffraction studies have led to an acceptance that the crystalline biomaterials are typically single crystals. There are certainly examples of this, but higher resolution studies are showing this is not always the case (Wilt 1999). Rather, some “single crystal” biomaterials are actually a mosaic of domains delimited by organic layers or they may contain significant occlusions of proteinaceous material (Wilt 2002). Yet, they exhibit many of the same diffraction properties as those of a single crystal (Simkiss 1986). As biomaterials

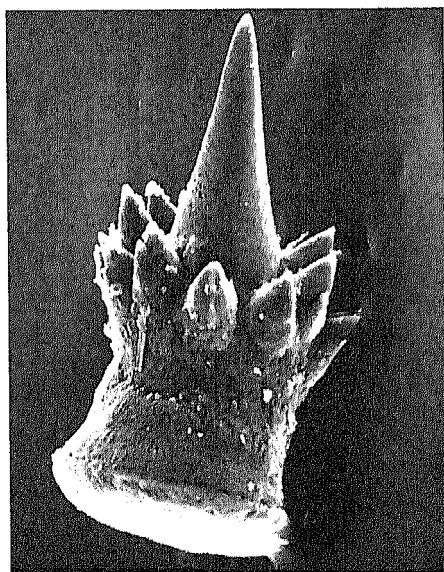


Figure 3. Calcitic spicule formed by the ascidian *Bathypora ovoidea*. Length about 120 microns. (Micrograph from the collection of the late H.A. Lowenstam).

become increasingly characterized, a better understanding of both short-range and long-range structures and assembly of biominerals could change our interpretations of mineralization mechanisms.

BIOMINERALIZATION CONCEPTS

For nucleation and growth to occur, biomineral formation requires a localized zone that achieves and maintains a sufficient supersaturation. In most biological systems, the site of mineral deposition is isolated from the environment by a physical delimiting geometry. The actual size of that site or volume is sometimes ambiguous, but it is generally agreed that this region must limit diffusion into/out of the system or utilize a type of compartment. The extent of this isolation can be passive and minimal such as observed when bacteria cluster to form an intercellular zone that is diffusion-limited. At the other extreme, intracellular vesicles create compartmentalized environments where compositions can be precisely regulated. This compartment must be capable of modifying the activity of at least one biomineral constituent (usually the cation) as well as protons and possibly other ions. Any fluxes in ion chemistry must meet one constraint: the fluid must maintain electroneutrality. Ion supply (or removal) occurs by two means: Active pumping associated with organelles near the sites of mineralization or passive diffusion gradients. As will be shown throughout this volume, organisms use a great variety of anatomical arrangements to facilitate ion movement.

The chemical compositions of *in vivo* fluids at and adjacent to sites of biomineral formation have direct relevance to our understanding of the mineralization processes and of the consequent degree of control exerted by the organism on its internal environment. Later in this volume, we will be reminded that these fluid compositions reflect, to variable degrees, the marine roots of organisms in evolutionary history (e.g., Knoll 2003). Surprisingly, however, little information has been published concerning fluids for most organisms. Table 2 compares the major solute compositions of seawater and an average freshwater to the typical compositions of several biological fluids. One sees that the major constituents in the extrapallial fluid of marine mollusks reflect the higher salinity of its saltwater environment. (Extrapallial fluids are found in the space between the secretory epithelium of the mantle and the growth surface of the nacreous aragonite biomineral. See illustration in Zaremba et al. 1996). In contrast, extrapallial fluids of freshwater mollusks have much higher solute concentrations than their low salinity environment. A comparison of the two organisms reveals very different fluid compositions, yet both form aragonitic shells!

Table 2 reminds us that organisms possess fluids with significant ionic strengths. This means that mineralization studies must address the solution chemistry in terms of ion activity, not concentration. Careful use of activity coefficient models is necessary to estimate the supersaturation of growth environments. For example, calcium ion in a blood plasma with the physiological ionic strength of 0.15 molal (see Table 2) has an activity coefficient of approximately 0.3, compared to a value of 1.0 in an infinitely dilute solution (e.g., Langmuir 1997). In high salinity fluids associated with marine environments, the correction to activity becomes greater (and sometimes more ambiguous). In addition to affecting supersaturation, ionic strength mediates the charges of precursor molecules, thus affecting the stabilization of colloids and amorphous gels (e.g., Iler 1979; Perry 2003).

Investigations of cellular processes have led to general insights regarding cation concentrations in the tissues of higher organisms (da Silva and Williams 1991). In biology calcium is very highly controlled at levels in the range of 10^{-8} to 10^{-6} M, owing

Table 2. Summary of ion compositions in natural waters and biological fluids.

	Concentration (mmol/kg)						Concentration ($\mu\text{mol/kg}$)						pH	I.S.		
	Na ⁺	K ⁺	Ca ²⁺	Mg ²⁺	HCO ₃ ⁻	Cl ⁻	SO ₄ ²⁻	Sr ²⁺	Li ⁺	Cu ²⁺	Zn ²⁺	Fe ⁺			Mn	(PO ₄) _T
Seawater ¹	479	10.4	10.5	54.3	2.0	558	28.9	88-92	26-27	na	na	na	na	<0.1-3 ¹	8.1	700
Marine Algae ³ (<i>Valonia</i>)	80	400	1.5	50	(10)?			na	na	na	na	na	na	5 (HPO ₄ ²⁻)	na	na
Marine mollusk ⁴ (<i>Pinctada fucata</i>)	431	12.6	9.7	50.7	3.6	524	27.9	89	29	2.9	176	22.4	4.4	502	7.4	664
Freshwater ²	0.31	0.04	0.37	0.15	0.87	0.22	0.12	na	na	na	na	na	na	na	4-7	
Freshwater mollusk ⁴ (<i>Hyriopsis schlegelii</i>)	22.1	0.57	4.1	0.63	10.5	15.0	5.2	4.3	na	5.2	22.3	56.4	54.2	41.1	8.15	44
Red blood cells ³	11	92	10 ⁻⁴	2.5	(10)?	50		na	na	na	na	na	na	3 (HPO ₄ ²⁻)	na	94-106
Blood plasma ³	160	10	2	2	30	100		na	na	na	na	na	na	3 (HPO ₄ ²⁻)	7.4	158

Notes:

- 1 For a salinity of 35 parts per thousand, 25°C, P = 1 atm (Bernier and Bernier 1996)
- 2 Average "actual" world river composition. (Bernier and Bernier 1996)
- 3 da Silva and Williams (1991)
- 4 Wada and Fujimuki (1974)

to its key roles in signaling and metabolic processes. Similarly, free magnesium ion is reported to be approximately 10^{-3} M in all compartments except some vesicles. Incidentally, Simkiss (1986) noted the essential role of magnesium ion in mineralization processes because of its role in stabilizing carbonate and phosphate crystal formation. Other elements such as zinc are found at concentrations as low as 10^{-9} in the cytoplasm, while the free ion has concentrations as high as 10^{-3} M in some vesicles. In contrast, manganese has concentrations of approximately 10^{-8} M almost everywhere, whether in or out of the cell, but may be $\ll 10^{-8}$ M in eukaryotic cells.

BASIC PROCESSES OF BIOMINERALIZATION

Biom mineralization processes are divided into two fundamentally different groups based upon their degree of biological control. Lowenstam (1981) introduced these as "biologically induced" and "organic matrix-mediated," with the latter generalized by Mann (1983) to "biologically controlled" mineralization. Recognizing that the detailed processes of biom mineralization within this convention are as varied as the organisms themselves, this section outlines basic mineralization strategies to help the reader place the information presented in subsequent chapters into a mechanistic framework. We emphasize "location, location" to show: 1) how/where biom mineral constituents can be concentrated as ions or solid phases; 2) types of translocation that can occur; and 3) resting places and transformation of the end-products. Using this approach, we can further define the variable degrees of biological control. It is the specific nature and degree of control that is central to understanding the extent of biological control of the elemental compositions of biom minerals. Likewise, transport mechanisms and hydration environments are certain to also affect minor element chemistry. These are the roots of deciphering the vital effect.

Biologically induced mineralization

The secondary precipitation of minerals that occurs as a result of interactions between biological activity and the environment is termed "biologically induced" mineralization. In this situation, cell surfaces often act as causative agents for nucleation and subsequent mineral growth. The biological system has little control over the type and habit of minerals deposited, although the metabolic processes employed by the organism within its particular redox environment mediate pH, $p\text{CO}_2$ and the compositions of secretion products (e.g., McConnaughey 1989a; Fortin et al. 1997; Tebo et al. 1997; Frankel and Bazylinski and Frankel 2003). These chemical conditions favor particular mineral types in an indirect way (Figure 4). In some cases, biological surfaces are important in the induction stage because nucleation often occurs directly on the cell wall, and the resulting biom minerals can remain firmly attached. In open waters, this epicellular mineralization can lead to encrustation so complete that gravitation overcomes buoyancy, and they settle through the water column. The sediment record attests to the extensive occurrence of this phenomenon (e.g., Knoll 2003; Van Cappellen 2003).

Heterogeneity is the hallmark of biologically induced minerals. Frankel and Bazylinski (2003) show that the compositions of minerals resulting from induced processes vary as greatly as the environments in which they form. This heterogeneity includes variable external morphology (typically poorly defined), water content, trace/minor element compositions, structure and particle size. Since these characteristics also typify inorganically precipitated minerals, unambiguous interpretations of the sediment and rock record continue to confound interpretations of earth environments.

Biologically controlled mineralization

In "biologically controlled" mineralization, the organism uses cellular activities to

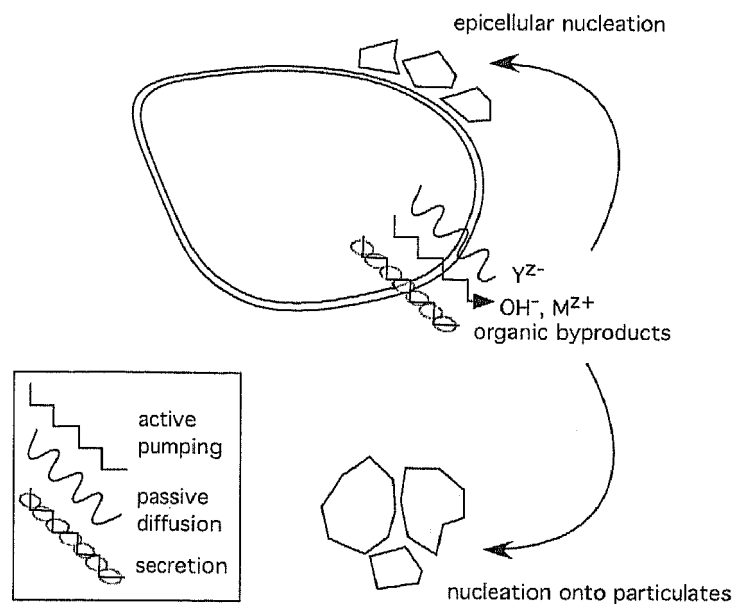


Figure 4. Schematic of biologically induced mineralization. Mineral precipitates form as a result of metabolic activities that affect pH, $p\text{CO}_2$, and secretion products. The cell is a causative agent only, without control over mineral type or habit.

direct the nucleation, growth, morphology and final location of the mineral that is deposited. While the degree of control varies across species, almost all controlled mineralization processes occur in an isolated environment. The results can be remarkably sophisticated, species-specific products that give the organism specialized biological functions.

Biologically controlled mineralization processes can be described as occurring extra-, inter- or intracellularly. These distinctions refer to the locations of the mineralization site with reference to the cells responsible for mineralization. However, not all mineralization processes can be classified in this simple manner. In some cases, mineral formation begins within the cell and then proceeds outside the cell. Identifying what are in essence, end members at least helps us understand the overall complexity. We will therefore discuss extra-, inter- and intracellular biomineralization separately.

Biologically controlled extracellular mineralization. In extracellular mineralization, the cell produces a macromolecular matrix outside the cell in an area that will become the site of mineralization. The term matrix refers to a group of macromolecules comprised of proteins, polysaccharides or glycoproteins that assemble to form a three-dimensional framework. The matrix composition is unique in that many of its proteins contain a high proportion of acidic amino acids (especially aspartate) and phosphorylated groups (Veis and Perry 1967; Weiner 1979; Weiner et al. 1983a,b; Swift and Wheeler 1992). The structures and compositions of these organic frameworks are genetically programmed to perform essential regulating and/or organizing functions that will result in the formation of composite biominerals.

There are two means by which the cell can transfer constituents to the matrix. In the first, the cell may actively pump cations through the membrane and into the surrounding region (e.g., Simkiss 1986). Once out of the cell, the supersaturation level of the fluid is established and maintained by ion diffusion over relatively large distances to the organic matrix (Figure 5a). In the second approach, the cations may be concentrated within the cell into cation-loaded vesicles, exported through the membrane and later broken down by precursor compounds at the organic matrix (Figure 5b). The latter mechanism is used for cartilage mineralization in the epiphyseal growth plate (Ali 1983). It is also probably used by sea urchin larvae to introduce amorphous calcium carbonate into spicule-forming vesicles, where it subsequently crystallizes into calcite (Beniash et al. 1999). Anion movement is typically the result of passive diffusion in response to the electroneutrality requirement and is ultimately driven by pH gradients created during cation transport (Simkiss 1976; McConnaughey 1989b). In both approaches, the cell works actively to supply cations to an external organic matrix for "on-site" nucleation and growth. This is distinguished from the epicellular nucleation and growth that occur during biologically induced mineralization.

Almost all structures that form by extracellular processes develop upon a pre-formed matrix derived from secretory products of multicellular epithelial tissues. Watabe and Kingsley (1989) suggest that these tissues have additional significance as extensive

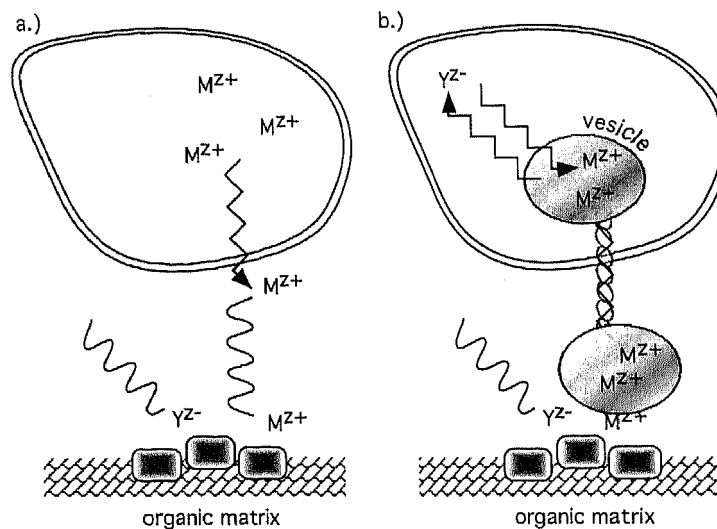
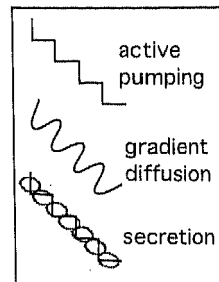


Figure 5. Illustrations of biologically controlled extracellular mineralization showing that this process is distinguished by nucleation outside of the cell. a.) Cations are pumped across the cell membrane and move by passive diffusion through extracellular fluids to the site of mineralization. b.) Cations are concentrated intracellularly as aqueous ions into a vesicle that is subsequently secreted. Compartment breakdown at site of mineralization releases cations for biominer formation.



substrates that facilitate the formation of massive skeletons. Examples of organisms believed to mineralize primarily by extracellular biologically controlled processes include the external tests of certain foraminifera (Towe and Cifelli 1967; Zeebe and Sanyal 2002; Erez 2003), cephalopod statoliths (Bettencourt and Guerra 2000), shells of mollusks (Gregoire et al. 1955; Crenshaw 1980; Weiner and Traub 1980, 1984; Falini et al. 1996; Pereira-Mouries et al. 2002; Weiss et al. 2002; Gotliv et al. 2003); exoskeletons of bryozoans (Rucker and Carver 1969), scleractinian corals (Constantz 1986; Constantz and Meike 1989), bones and teeth (e.g., discussion in Lowenstam and Weiner 1989; Veis 2003).

To understand mineralization mechanisms, one must possess knowledge regarding the structures of the organic matrix components and of the entire framework. One of the most thoroughly investigated matrices in this respect is the mollusk shell nacreous layer. X-ray and electron diffraction reveal that the most ordered component is β -chitin, and the most abundant component is silk fibroin, but it shows little evidence of order based on diffraction (Weiner and Traub 1984). It has also been shown that there is a well defined spatial relation between the chitin of the framework and the associated aragonite mineral. This implies that the nucleation mechanism is most likely epitaxial (Weiner and Traub 1984). The acidic components impart a chemical activity and template structure that direct the resulting mineralization process. Not much is known about their secondary structures. Mollusk acidic matrix proteins are thought to mainly adopt the β -sheet structure (Worms and Weiner 1986). More recent structural information on the nacreous layer raises the interesting possibilities that the silk fibroin component of the matrix is a gel (Levi-Kalisman et al. 2001) (Fig. 6) and that it does not form layers on either side of the chitin, as was proposed by Weiner and Traub (1984). Several mollusk shell matrix proteins have been sequenced. Most have been purified by gel electrophoresis and are not highly acidic.

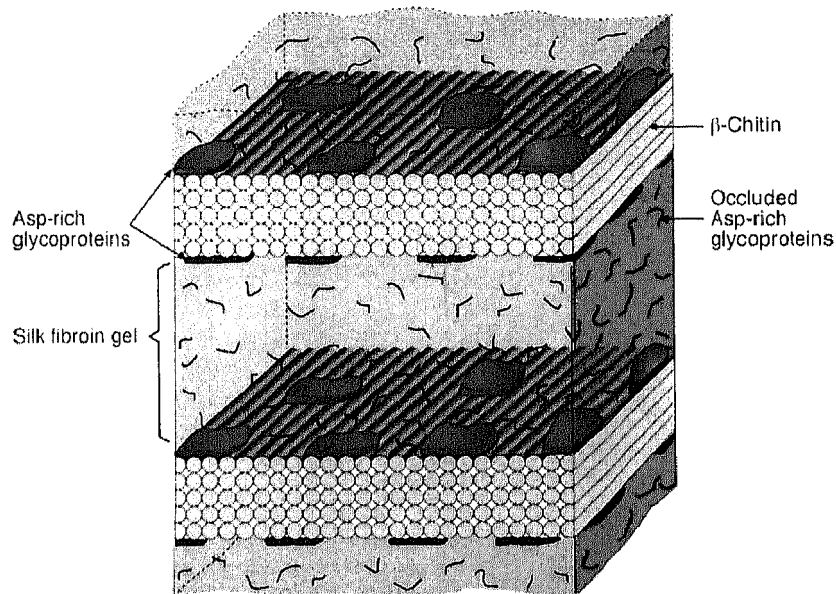


Figure 6. Model of the nacreous layer organic matrix, proposing that chitin and acidic macromolecules constitute the major framework constituents, and that the silk fibroin component forms a gel between the layers (Levi-Kalisman et al. 2001).

This contrasts with the overall amino acid composition of the soluble components in the matrix. This dichotomy may be due to the fact that only with massive and rapid fixation of the proteins in a gel after separation by electrophoresis can the highly acidic proteins be visualized (Gotliv et al. 2003). The one highly acidic protein that has been sequenced from mollusk shells has a fascinating domain-like structure that repeats itself many times (Sarashina and Endo 1998). It will be most interesting to discover its function.

Determining the functions of matrix proteins is the real bottleneck in understanding extracellular matrix mineralization. Several assays are used for demonstrating a protein's ability to modulate mineral nucleation and growth in various ways (Wheeler et al. 1981; Belcher et al. 1996). One that is reproducible and fairly specific was developed by Falini et al. (1996). It assays for aragonite-specific nucleation. It has been used to show that in mollusk nacreous layer matrices, some of the proteins are indeed able to specifically nucleate aragonite (Gotliv et al. 2003). Interestingly, in this *in vitro* assay, the aragonite is nucleated via a transient amorphous calcium carbonate (ACC) phase that also does not contain tightly-associated water molecules. It has been shown that mollusk larvae also produce their shells via an ACC transient phase (Weiss et al. 2002).

Biologically controlled intercellular mineralization. This type of mineralization is not widespread. It typically occurs in single-celled organisms that exist as a community. At first glance, intercellular mineral formation appears to be a variant of extracellular mineralization. In this case, however, the epidermis of the individual organisms serves as the primary means of isolating the site of mineralization (Mann 2001). As shown in Figure 7, the epithelial substrate reproducibly directs the nucleation and growth of

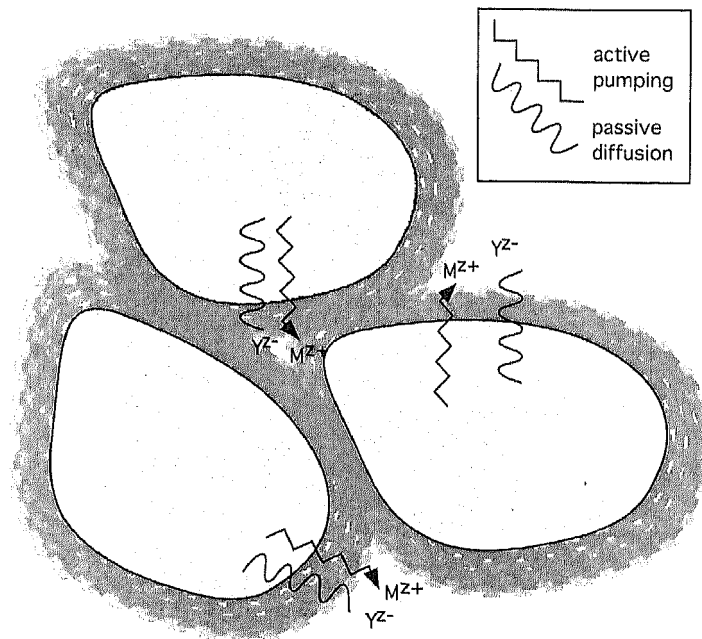


Figure 7. In biologically controlled intercellular mineralization, the epithelial surfaces of cells are used as the organic substrate for nucleation and growth with a preferred orientation. Cations are pumped out of the cell and fluid compositions are regulated to maintain control over the biomineral type and extent of growth.

specific biomineral phases over large areas of cell surfaces. Mineralization between cells can become so extensive as to completely fill the intercellular spaces, thus forming a type of exoskeleton. At first glance, this might appear to be a type of biologically induced mineralization, but studies have shown that the epidermis of individual organisms directs the polymorph and shape of the biomineral that forms. An example is found in calcareous algae that nucleate and grow calcite with a *c*-axis orientation that is perpendicular to the cell surface (Borowitzka et al. 1974; Borowitzka 1982).

Biologically controlled intracellular mineralization. Controlled mineralization can also occur within specialized vesicles or vacuoles that direct the nucleation of biominerals *within* the cell. This is a widespread strategy. These compartmentalized crystallization environments govern the resulting biomineral composition and morphology. In this situation, the cell has a high degree of control upon the concentrations of cation and anion biomineral constituents in an environment where an organic matrix may also be active as a nucleating template. The compartment membrane also regulates the pH, $p\text{CO}_2$ and—at least to some extent—minor and trace element compositions. Indeed, the mineralized structures that develop from intracellular processes often exhibit highly intricate species-specific morphologies.

The schematics in Figure 8 show that the designation “intracellular mineralization”

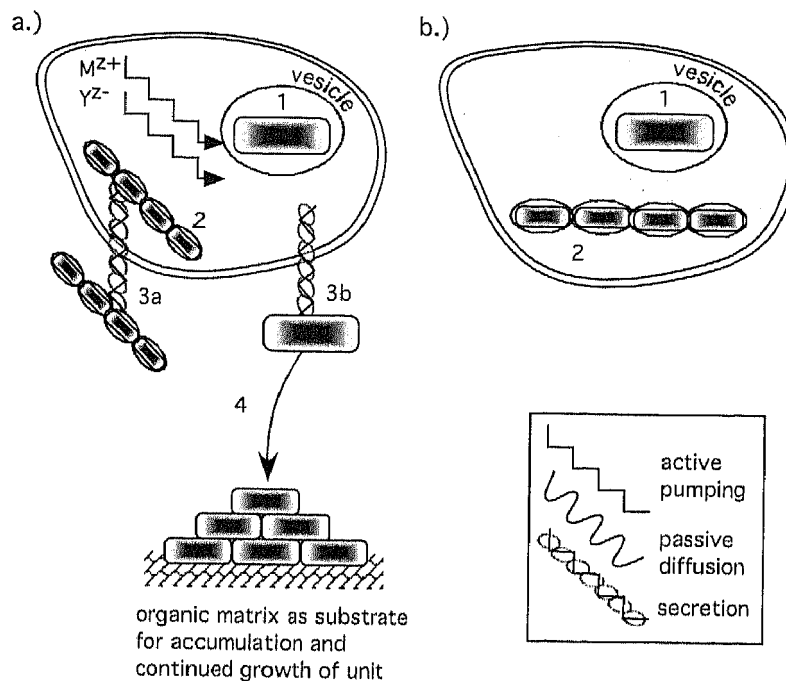


Figure 8. Schematics of biologically controlled intracellular mineralization shows that nucleation occurs within the cell in a specialized vesicle. a.) Biomineral is nucleated (1) within a compartment in the intracellular environment. These growth units may be assembled intracellularly (2) for subsequent secretion (3a) or secreted as an individual unit (3b) for subsequent organization into a higher order growth structures as a massive or organic-mineral composite. b.) In a less frequently used type of mineralization, the biomineral unit remains within the cell (1) as a single growth unit or is organized intracellularly (2) into a higher order structure.

is a broad concept that encompasses a number of fates for the initial compartment-based precipitate. Figure 8a illustrates the general scenario whereby biominerals form intracellularly before eventually becoming extracellular. These structures may leave the cell as individual units or be preassembled prior to extrusion through the membrane. An example of the latter is used by the Haptophyte algae. These organisms preassemble the single crystal segments of calcite intracellularly into a coccolith structure before passing the mature sheath through the cell membrane. Biomineral is transported through the cell membrane by two general means. First, the vesicle(s) or vacuole(s) may migrate to the membrane where the mature biomineral as an individual or pre-assembled structure is extruded by exocytosis. In an alternative process, the compartment membrane fuses with the plasma membrane, and a "premature" biomineral becomes exposed through a membrane breach (Watabe and Kingsley 1989).

Species-specific fates await the secreted crystals in the extracellular environment (Figure 8a). In a relatively straightforward usage, biominerals can be immediately employed without further growth or modification. For example, the mature coccolith structures extruded by Haptophyte algae are immediately used to enclose the cell (Brownlee et al. 1994; de Vrind-de Jong et al. 1994; de Vrind-de Jong and de Vrind 1997; Young and Henriksen 2003). Similarly, the silica mineralizing algae possess vesicles that appear to mold the amorphous silica into pre-fabricated scales prior to release (Watabe and Kingsley 1989).

The release of vesicular biominerals can also mark the beginning of a secondary assembly process whereby the biominerals interact with an extracellular organic matrix (Figure 8a) to become an ordered extracellular structure. Some miliolid foraminifera form bundles composed of an array of oriented crystals. Each crystal is enveloped by organic material, then bundles are passed through the cell membrane by exocytosis. Other miliolids accrete pre-formed crystals and matrix materials onto extracellular surfaces to form a loosely packed wall structure in a "stack-of-bricks" process (e.g., Berthold 1976; Hemleben, et al. 1986).

Echinoderms are perhaps the most surprising exploiters of an intracellular strategy to form huge mineralized products, some of which are centimeters long. These form within a vesicle that is the product of many cells fusing their membranes. The mineral is exposed to the environment only if and when the membrane is degraded (Markel 1986). Although the spicular structures of sea urchin larvae begin as amorphous calcium carbonate, the final products are typically single crystals. These biominerals often express a preferred crystallographic orientation and have smooth curved surfaces (Beniash et al. 1997; Beniash 1999; Wilt 2002).

Not all mineralized structures of intracellular origin become extracellular. Figure 8b shows that the biomineral-containing vesicles may form intracellularly and subsequently stay within the cell. While this mineralization process is not widely used by many phyla, for some organisms, it is a unique and important strategy. Perhaps the best example is exhibited by the magnetosome-producing bacteria. These structures are membrane-bound, euhedral crystals of magnetite or greigite that assemble via their magnetic fields to produce biomineral "chains" (Bazylinski 1996; Schüler and Frankel 1999; Bazylinski and Frankel 2003). Intracellular mineralization is also found in the radiolarians. These organisms form siliceous spicules within cytoplasmic extensions via numerous small vesicles that stream up to the cytoplasmic compartment (Simpson and Volcani 1981; Simkiss 1986). Plants also use intracellular mineralization processes to deposit calcium as oxalate crystals (Raven et al. 1982; Webb 1999; Skinner and Jahren 2003). Figure 9 illustrates an example of these unusually-shaped crystals of calcium oxalate monohydrate (whewellite) produced by the plant *Psychotria*.

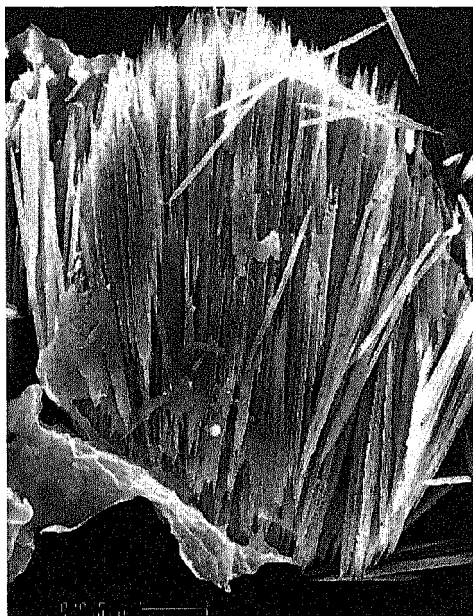


Figure 9. Calcium oxalate monohydrate (whewellite) crystals produced by the plant *Psychotria*. Scale bar 10 microns. (From the collection of the late H.A. Lowenstam).

The walls, or frustules, of diatoms are also the result of intracellular mineralization. Using a combination of two intracellular processes, diatoms first polymerize silica into specialized vesicles on an organic matrix of polypeptides (Swift and Wheeler 1991, 1992; Kroger et al. 1999, 2002). Silica is subsequently moved to the interior surface of the cell membrane to form an intracellular frame (Garrone et al. 1981). Matrix controls on frustule patterning are discussed elsewhere (Noll et al. 2002; Pohnert 2002; Sumper 2002; Vrieling et al. 2002). For more details, see Perry (2003).

Comments on biomineralization processes

The framework of processes outlined above is useful to represent end members, but one must realize that as we examine the evolution and biochemistry of mineralization processes in this volume, these simple representations will be developed into a near-continuum of different strategies with considerable complexity. Part of this complexity lies in how organisms control their local environment to make a morphologically and functionally diverse group of minerals through changes in local chemistry and different shaping strategies. However, an additional question for earth scientists involves how biological mineralization processes determine the compositional signatures contained in biogenic minerals. With the increasing reliance upon compositional proxies as indicators of past environmental conditions, this is a problem that needs to be addressed. It is discussed in some detail below.

VITAL EFFECTS

The preservation of biogenic minerals in the fossil record offers wonderful opportunities for reconstructing the ancient environments in which organisms lived, and also for learning more about the evolution of their metabolism and physiology (reviewed in Chapter 11 of Lowenstam and Weiner 1989). What exactly can be learned, however, also depends upon how much we understand about the biomineralization processes

involved in skeleton formation and the states of preservation of the fossil material being analyzed. Much attention has been paid to the latter when it comes to fossils extracted from strata now on the continent, but surprisingly little attention seems to be paid to the preservation states of shells of marine organisms in deep-sea sediments. We will focus, however, on the many open questions that concern the signals embedded in biogenic minerals and in particular questions related to the biological processes overriding the environmental signals—the so-called vital effect (Urey et al. 1951).

The first quantitative use of biogenic minerals for extracting information about the environment of formation was the demonstration that the stable oxygen isotopic composition of some taxa (mollusks in particular) reflects in part the temperature of the water in which the mollusks lived (Urey et al. 1951). Epstein et al. (1951) noted however that not all biogenic minerals are deposited in isotopic equilibrium and that “the presence of a physiological effect in the case of certain groups of animals such as the echinoderms and corals, and plants such as a coralline algae, has seemed probable” (p. 424). This so-called “physiological effect” in time came to be referred to by the geochemical community as a “vital effect.” Furthermore, because most geochemists investigated biogenic materials to reconstruct the paleoenvironments in which animals lived, the vital effect, just like post-burial diagenetic effects, represented a severe hindrance to their goals.

To this day, the most common approach used to resolve the problem involves identifying the taxa that faithfully record environmental parameters while avoiding the others. This empirical approach has the obvious advantage that while one uses these apparently “reliable” organisms, there is no need to worry about the other organisms with their associated complications. The problem is that in the absence of a deep understanding of the vital effects, it is well nigh impossible to know when the recording is really faithful, particularly when differentiating between equilibrium and small non-equilibrium effects. This problem has become acute in the last decade with the realization that the climate is changing and that one of our most promising means of assessing the significance of this change is to understand the fine details of past climatic changes. Understanding vital effects is therefore of considerable current importance.

At this point, we do not have the answers, and a perusal of this book describing the current state of the art in the field of biomineralization will probably not provide many answers. This is not because the subject matter is too difficult to resolve, but because the interests of most of the scientists investigating the field of biomineralization are elsewhere. Very few members of the geochemical community have made this their major interest, but those who have made very significant contributions (e.g., Erez 1978; McConnaughey 1989). A much more concerted effort, however, is needed.

Two basic categories of vital effects

Kinetic effects. McCrea (1950) investigated disequilibrium effects in an *in vitro* system in which calcium carbonate was precipitated under varying conditions. The greatest departures from equilibrium were found when the precipitates formed rapidly at temperatures below 15°C or above 60°C. Epstein et al. (1953) identified this potential problem in biogenic calcium carbonate when they noted that the calcium carbonate deposited by abalones, in an attempt to fill up holes that had been drilled in their shells, was not in oxygen isotopic equilibrium with the water in which the abalones lived (see also Epstein and Lowenstam 1954). Although the effect was small, it was clearly identifiable. They attributed it to the rapidity with which the material was laid down. Since then many different observations of diverse organisms have been reported in which mineral laid down rapidly appears to be out of isotopic equilibrium (Weber and Woodhead 1970; Land et al. 1975; Erez 1978; McConnaughey 1989a; Ziveri et al. 2003).

The mechanisms responsible for this may be due to varying kinetics of the uptake, transport and/or deposition stages of mineral formation. Clearly the issue is complex.

Taxonomic effects. Urey et al. (1951) also recognized that certain phyla may not deposit their skeletal material in isotopic equilibrium with the environment, and within a few years it was clearly demonstrated that some phyla completely control their isotopic compositions (Craig 1953), as well as their Mg and Sr skeletal contents (Chave 1954; Blackmon and Todd 1959; Lowenstam 1963). Perhaps the best example is the Echinodermata (Weber and Raup 1966), although it has been noted in the echinoderms as well as other taxa that superimposed on the vital effect are variations that do reflect environmental changes (Weber and Raup 1966). At the same time other phyla were declared equilibrium depositors and hence useful for paleoenvironmental reconstructions. These were mainly the mollusks, the brachiopods and the planktonic foraminifera. It has subsequently been found in these phyla as well, that the situation is more complicated, with some members of the phylum being faithful recorders, and others not (Duplessy et al. 1970; Carpenter and Lohmann 1995; Letizia et al. 1997). Thus the concept of good and bad species was introduced. This designation, however, only applies to a given proxy. Many marine mollusks and planktonic foraminifera deposit their shells in isotopic equilibrium with the environment (Epstein et al. 1953; Erez and Luz 1983), but most do not have Sr or Mg contents that are in equilibrium with the environmental water in which they live (Elderfield et al. 1996). The mechanisms involved are therefore obviously different for different shell properties, and obtaining an in-depth understanding of this complicated phenomenon is by no means simple. In fact at this juncture, the key question to be addressed is probably how equilibrium is obtained, rather than how is non-equilibrium obtained? The latter is the rule, and the former is the exception to the rule.

Equilibrium with the environment—the real puzzle

It has been widely noted that in almost all organisms that control mineral formation, and the mollusks are no exception, the mineralization process takes place in isolated compartments within cells or between cells (Lowenstam and Weiner 1989; Simkiss and Wilbur 1989). Furthermore, all the different cells responsible for mineralization have to transport the raw materials to the site of deposition, which may be remote from the ultimate source of the ions, namely the environment. Often the ions are stored temporarily in membrane-bound vesicles and then re-dissolved. From this perspective, it is not surprising that equilibrium can actually be maintained between the shell and the environment. If we could understand how this is achieved, we would probably understand much more about the reasons for non-equilibrium.

In this section, we will try to analyze this issue, focusing more on the formation of the mineral phase itself rather than on the uptake, transport and temporary storage processes. See Erez (2003) for details on these important aspects, as well as for a discussion of the vital effect in this context.

Over the last two decades, the problem has become more compelling as more and more properties of biogenic minerals are being used as proxies for different aspects of the paleoenvironment. In the 1950s, the pioneering work was done on oxygen and carbon stable isotopic compositions, and soon afterwards the variations in minor elements (particularly strontium and magnesium contents) were also measured (Chave 1954; Lowenstam 1964). Today more than 10 proxies are known for biogenic minerals that are purported to monitor many different environmental parameters in addition to temperature. Each proxy may have its own vital effect story. We will approach the subject by discussing aspects of the biomineralization process in relation to possible vital effect mechanisms for different proxies.

Carbonic anhydrase. This enzyme essentially catalyses the hydration and dehydration of $\text{CO}_2(\text{aq})$, which in the absence of the enzyme is a rather slow reaction (Simkiss and Wilbur 1989). If it is present at the site of deposition and is working efficiently, it should not only overcome the slow hydration of aqueous CO_2 , but also eliminate any kinetic isotopic fractionation at least with respect to oxygen (McConnaughey 1989a). Carbonic anhydrase is widely distributed (e.g., it is present in corals; Ip et al. 1991) and in the gland responsible for eggshell formation in birds (Gay and Mueller 1973). It is known indirectly to be involved in mineralization as an inhibitor of the enzyme to reduce the rate of mineralization (Goreau 1959). It has been identified in the membrane of the spicule forming vacuole in the gorgonian, *Leptogorgia* (Kingsley and Watabe 1987). In fact, a special form of carbonic anhydrase has been identified as a matrix component in mollusk shells (Miyamoto et al. 1996). This form is special in the sense that the carbonic anhydrase sequence is spliced into a shell matrix protein. So this enzyme really is at the site of mineral formation in mollusks. Is this the secret of equilibrium deposition of oxygen isotopes in mollusk shells?

The medium from which mineral forms (see also Erez 2003). There is little information on the chemistry of the medium from which minerals form in biological environments. Some studies involving mollusks analyzed the fluid between the organ that forms the shell (the mantle) and the shell itself and showed that it has a chemical composition close to seawater (Crenshaw 1972). It is not clear, however, whether this extrapallial fluid really is the medium from which mineral forms. There is much indirect evidence based on analyses of the trace elements in carbonate-containing biogenic minerals that the composition of the medium from which mineral forms does not generally reflect seawater composition. A survey of Mg and Sr contents in mollusk shells showed that members of almost all the 5 major classes control the amounts of these two elements that enter the shell (e.g., Table 2). Only the chitons have Mg and Sr contents that correspond to equilibrium deposition from seawater (Lowenstam 1963). Recently, Cohen et al. (2002) proposed that the reef corals changed the composition of the medium over the diurnal cycle. At night, this fluid has a composition that is approximately sea water but becomes significantly out of equilibrium during the day when symbiotic photosynthesis is active (see Cohen and McConnaughey 2003).

It is always tacitly assumed that mineral deposition must occur from a saturated solution. Saturated it must be, although it is conceivable that a strategy for controlling mineral deposition at the appropriate site may be to localize saturation only at that site, and maintain under-saturated conditions elsewhere. There is no evidence for this, however. In fact a recent study indicates quite the opposite; there is no solution as such from which mineral forms! A cryo-TEM study of the forming spicule of sea urchin larvae showed that the membrane of the vesicle in which the spicule grows is juxtaposed to the forming spicule. Thus there is little or no space for a liquid phase (Beniash et al. 1999). An alternative is that the crystalline mineral forms from a transient amorphous precursor phase, and in echinoderm larvae at least, the latter appears to be formed in vesicles within cells adjacent to the location of spicule formation (Beniash et al. 1999). The vesicles presumably transfer their mineral content as a colloidal solid phase into the site where the spicule forms. Even though this is by no means proven to be a general strategy in biology, the possible implications it presents for understanding vital effects could be most significant.

Transient mineral precursor phases. It has been shown that both mollusk and echinoderm larvae form their aragonitic shells and calcitic spicules, respectively, via a transient amorphous calcium carbonate (ACC) precursor phase (Beniash et al. 1997; Weiss et al. 2002; Addadi et al. 2003). It has not as yet been demonstrated that adults also form their skeletons in this manner. Note that these phyla are on two completely different

branches of the animal phylogenetic tree, and, as both have opted for the same strategy, the phenomenon may be widespread. Thus, even though it is premature to invoke this strategy as an important factor in explaining vital effects, it is worth examining briefly.

The formation of ACC occurs from a highly supersaturated solution. This can only be achieved if additives are present that prevent deposition of the crystalline phases. One such additive is Mg, and the concentrations required for ACC to form are similar to those found in sea water (Raz et al. 2000). It has also been shown that certain proteins are able to induce the formation and stabilization of ACC in the absence of Mg, which would otherwise almost instantaneously transform into a crystalline polymorph (Aizenberg et al. 1996). So at least in bivalve and echinoderm larval shells, Mg and proteins could play important roles in setting up the initial medium from which crystalline calcium carbonate forms. In fact *in vitro* experiments with proteins extracted from sea urchin larval spicules show that Mg has to be present for these proteins to induce ACC formation, although in lower amounts than is present in seawater (Raz et al. 2003). So in this case, a cooperative effect seems to exist between these specialized proteins and Mg.

If indeed the ACC precursor strategy turns out to be widespread in biology, this discovery will have many possible implications for vital effect mechanisms. Under what conditions can isotopic equilibrium be achieved during the transformation of ACC to aragonite or calcite, and what would be the differences in concentration of say, Mg, in the precursor versus mature phases? Interestingly, it has been noted that the transient forms of ACC are not hydrated in the two cases that have been studied (Addadi et al. 2003), as opposed to the stable forms of biogenic ACC. This lack of hydration would reduce the possibility of oxygen isotopic fractionation during the transformation process, as the major factor would be whether or not all of the ACC is converted into the mature crystalline form. If water is present and has to be removed during the transformation, then the efficiency of the process and the extent to which this water is in equilibrium with the environment, become important in terms of oxygen isotope fractionation. See Aizenberg et al. (2003a) for interesting observations and a discussion of this subject.

McCrea (1950) did show that when calcium carbonate forms very rapidly from seawater at temperatures below 15°C or above 60°C, variations in the oxygen isotopic composition of the precipitates occur of up to 5 ppm. He described these precipitates as gelatinous, as opposed to the coagulating precipitates formed within that temperature range. It would be interesting to repeat these type of experiments, while characterizing the atomic structure of the precipitates particularly in terms of atomic order. Could ACC be involved?

Adkins et al. (2003) studied the variations in oxygen and carbon isotopic compositions in deep sea corals. They noted that the most negative values for both oxygen and carbon isotopic compositions are at the trabecular centers and proposed an interesting mechanism to explain the vital effect related to the presence of a pH gradient. The assumption that they clearly state is that the mechanism of mineralization is the same for all parts of the trabecula. Is this really true? There has been considerable discussion about the precise mineral phase at these centers. An electron diffraction study indicates that calcite is present at the trabecular centers (Constantz and Meike 1989). To our knowledge, this observation has not been confirmed. Despite the real risk of speculating about speculations, it would be interesting to consider the implications if ACC functioned as a transient precursor phase of aragonite at the trabecular centers. Proving or disproving this will be a challenge because of the transient nature of ACC.

Biogenic mineral phase. Surprisingly, many open questions still remain regarding the detailed nature of the mineral phases formed by organisms. We submit that a better

understanding of some of these questions will shed light on some vital effect mechanisms.

1. The mineral phase itself: The crystalline mineral phases produced by organisms are generally well known. If, however, a skeletal tissue contains both a crystalline phase and an amorphous phase, the latter may easily be overlooked, especially if only X-ray diffraction is used to identify the bulk mineral phase. Such juxtapositioning of crystalline and amorphous carbonate minerals has recently been reported in sponge and ascidian spicules (Aizenberg et al. 2003b). It is well known, for example, that within foraminiferal shells variations in Mg contents can differ markedly from one location to another (Bender et al. 1975; Duckworth 1977; Brown and Elderfield 1996). The structural properties of the high Mg calcite phase may be quite different from those of the low Mg phase. It is conceivable that even the relative proportions of the different phases may have a direct bearing on temperature-related effects, as they do for the proportions of calcite and aragonite in some mollusk shells (Lowenstam 1954).
2. Surface to bulk ratio of individual crystals: The surface of an individual crystal is a prime location for adsorption of trace metals. In biology the crystals are often enveloped in an organic layer (the matrix), which may or may not interfere with the adsorption of the metals. The surface areas of large crystals in relation to their bulk (volume) are small, and thus complications due to trace element adsorption on the crystal surfaces are less likely. This is not the case for small crystals. The extreme example is bone. Bone crystals have the shape of extremely thin plates, just a few nanometers thick (Weiner and Price 1986). Thus mature bone crystals are only some 15-20 atomic layers thick, and a major proportion of the atoms are disordered just because they are at, or close, to the surface. These are therefore preferred sites for metal adsorption. Biogenic aragonite crystals are almost always much smaller than biogenic calcite crystals, with cross-sectional dimensions of the usually needle-shaped crystals in the micron range (Treves et al. 2003). The one major exception is the aragonite of the nacreous layer of mollusk shells, where the crystals are much larger. Thus knowledge of the surface to bulk ratio of the biogenic tissue being used for proxy analysis may shed light on whether or not surface adsorption of trace metals is significant compared with incorporation within the bulk. Such variations may differ subtly between taxa.
3. Extent of crystalline order and disorder within the bulk: A single crystal contains defects over and above the defects present at or close to the surface of the crystal. For the trace elements that are included in the bulk of the crystal, it is of interest to differentiate between those that are located at grain boundaries and/or dislocations and those that substitute for a major ion in a lattice location. This has been checked for Mg in several biogenic calcites by analyzing the total Mg contents and the Mg content based on the peak shift in X-ray diffraction. The latter is only due to Mg present in lattice positions. It was found that in all cases the Mg is almost entirely in the lattice position (Raz et al. 2000). This need not always be the case. Knowing that for, say, foraminiferal calcite, it also is only in the lattice, will provide greater assurance that the trace element distribution can be characterized by a unique fractionation factor. Alternatively, the relative distributions of a specific trace element between the two sites may explain species variations in part.
4. Occluded macromolecules: Echinoderms, mollusks, brachiopods, calcareous sponges and ascidians are all known to occlude macromolecules within their

crystals (Berman et al. 1993). These are usually glycoproteins, and it has been shown by single-crystal, high-resolution X-ray diffraction analyses that they are often located along specific crystal planes. Despite the fact that they are very large compared to the atomic order within the crystal, the glycoproteins do not cause major dislocations. Some disorder does result, as can be detected by line width broadening. These sites (probably indistinguishable from grain boundaries) within the crystal bulk are also possible locations for trace metals. The presence of occluded macromolecules and ions influences the solubility of the mineral phase, and this may directly bear on the mechanisms of differential dissolution of different genera of foraminifera and coccolithophoridae observed in deep-sea sediments.

Crystal shape. The shape of a crystal reflects the nature of the environment in which it grows. In biology this environment, and hence crystal shapes, are generally very well controlled. Detailed analyses of crystal shapes and, in particular, the exact crystal faces expressed can shed much light on the mechanisms of growth. If a very unstable face is expressed, then some process must be responsible for its stabilization. The unusual face may be a nucleating plane, as has been suggested for the formation of certain types of calcium oxalate monohydrate crystals in plants (Bouropoulos et al. 2001) and calcareous sponge spicules (Aizenberg et al. 1995). Another example of unstable faces being expressed occurs in the coccoliths (Young et al. 1999; Young and Henriksen 2003). These faces could in part explain different solubilities of coccolith calcite between species, as unstable faces are more soluble than stable ones. Curved surfaces of calcite are quite common, especially in cases where the crystal grows in a vesicle. These surfaces may be curved down to the atomic level. How such a curved surface is stabilized is not known, nor are its solubility characteristics. In general, detailed characterizations of crystal surfaces may be most helpful in understanding modes of formation and, in turn, vital effects, as well as solubility properties.

Ontogenetic variations. Variations in mineralization are known to occur in many different genera, including foraminifera. These too need to be understood in order to determine whether or not they can contribute to the complexities of equilibrium and non-equilibrium deposition. It may also be possible that the change in mineralization mechanism during growth is not a switch from one mechanism to another, but the addition of another mechanism in the juvenile and adult stages. Lowenstam and Weiner (1989) did raise this possibility for the scleractinian corals vis-a-vis the trabeculae centers of calcification.

Crystal maturation. Once formed, crystals may continue to change over long periods of time, especially if their surface to volume ratios are very high. This is the case in bone, where a sintering process occurs even within the lifetime of the animal and continues after death (Legeros et al. 1987). Thus diagenetic processes, even in the deep sea may not only involve dissolution, but also sintering. Obviously if in a closed system, this should have little effect on proxies. It can, however, complicate efforts to understand the basic mechanisms of deposition vis a vis proxies, as the mature mineral may not faithfully reflect the mineral phase formed initially. Chemical change may also occur during diagenesis. It has been shown, for example, that aragonite formed secondarily in coral skeletons even while the coral was still submerged (Spiro 1971).

Concluding comment

Given our present state of knowledge, the prospects for finding simple, robust explanations for different vital effects in terms of biomineralization mechanisms may seem hopeless at worst, and challenging at best. This, in our opinion, is most likely not

the case. More than anything else, the apparent magnitude of the problem is due to so few studies having been carried out with this purpose in mind. We believe that once a critical mass of research gets underway, pieces of this puzzle will begin to fall into place. We concur with the opinions of some (Schrag and Linsley 2002) that as the importance of paleoceanography continues to increase because of global change effects, and with it the wide use of proxies for reconstructing the paleo-ocean environment, the need for understanding the basic mechanisms of mineralization that pertain to these problems is paramount. We hope that as our understanding of "vital effects" improves, this term which has so often been used as "a façade hiding our ignorance" (Lowenstam and Weiner 1989), will become instead a vehicle for understanding important aspects of the biomineralization process itself.

ACKNOWLEDGMENTS

We thank Lia Addadi for her insightful comments and discussions. SW is the incumbent of the Dr. Walter and Dr. Trude Burchardt Professorial Chair of Structural Biology. This work was supported in part by a U.S. Public Service Grant (DE06954) from the NIDCR. PD acknowledges generous support of the U.S. Department of Energy, Division of Chemical Sciences, Geosciences and Biosciences (DE-FG02-00ER15112) and the National Science Foundation (NSF-OCE-0083173).

REFERENCES

- Addadi L, Weiner S (1992) Control and design principles in biological mineralization. *Angew Chem Int Ed* 31:153-169
- Addadi L, Weiner S (2001) Crystals, asymmetry and life. *Nature* 411:753-755
- Addadi L, Raz S, Weiner S (2003) Taking advantage of disorder: amorphous calcium carbonate and its roles in biomineralization. *Adv Mat* 15:959-970
- Adkins JF, Boyle EA, Curry WB, Lutringer A (2003) Stable isotopes in deep-sea corals and a new mechanism for "vital effects." *Geochim Cosmochim Acta* 67:1129-1143
- Aizenberg J, Grazul JL, Muller DA, Hamann DR (2003a) Direct fabrication of large micropatterned single crystals. *Science* 299:1205-1208
- Aizenberg J, Hanson J, Koetzle TF, Leiserowitz L, Weiner S, Addadi L (1995) Biologically-induced reduction in symmetry: A study of crystal texture of calcitic sponge spicules. *Chem Eur J* 1(7):414-422
- Aizenberg J, Lambert G, Addadi L, Weiner S (1996) Stabilization of amorphous calcium carbonate by specialized macromolecules in biological and synthetic precipitates. *Adv Mat* 8:222-226
- Aizenberg J, Weiner S, Addadi L (2003b) Coexistence of amorphous and crystalline calcium carbonate in skeletal tissues. *Conn Tissue Res* 44:(in press)
- Ali SY (1983) Calcification of cartilage. *In: Cartilage, Structure, Function and Biochemistry*. Hall BK (ed) Academic Press, New York, p 343-378
- Bäuerlein E (ed) (2000) *Biomineralization*. Wiley-VCH Verlag GmbH, Weinheim Germany
- Bazylnski DA (1996) Controlled biomineralization of magnetic minerals by magnetotactic bacteria. *Chem Geo* 132:191-198
- Bazylnski DA, Moskowitz BM (1997) Microbial biomineralization of magnetic iron minerals: Microbiology, magnetism and environmental significance. *Rev Mineral* 35:181-223
- Bazylnski DA, Frankel RB (2003) Biologically controlled mineralization in prokaryotes. *Rev Mineral Geochem* 54:217-247
- Belcher AM, Wu XH, Christensen RJ, Hansma PK, Stucky GD, Morse DE (1996) Control of crystal phase switching and orientation by soluble mollusc-shell proteins. *Nature* 381(6577):56-58
- Bender ML, Lorens RB, Williams DF (1975) Sodium, magnesium and strontium in the tests of planktonic foraminifera. *Micropaleont* 21:448-459
- Beniash E, Addadi L, Weiner S (1999) Cellular control over spicule formation in sea urchin embryos: a structural approach. *J Struct Biol* 125:50-62
- Beniash E, Aizenberg J, Addadi L, Weiner S (1997) Amorphous calcium carbonate transforms into calcite during sea-urchin larval spicule growth. *Proc R Soc London B Ser* 264:461-465
- Berman A, Hanson J, Leiserowitz L, Koetzle TF, Weiner S, Addadi L (1993) Biological control of crystal texture: A widespread strategy for adapting crystal properties to function. *Science* 259:776-779

- Berner EK, Berner RA (1996) Global Environment. Prentice Hall Inc, Upper Saddle River New Jersey
- Berridge MJ, Bootman MD, Lipp P (1998) Calcium-A life and death signal. *Nature* 395:645-648
- Berthold WU (1976) Biomineralisation bei milioliden Foraminiferen und die Matrizen-Hypothese. *Naturwissenschaften* 63:196
- Bettencourt V, Guerra A (2000) Growth increments and biomineralization process in cephalopod statoliths. *J Exper Mar Biol Ecol* 248:191-205
- Blackmon PD, Todd R (1959) Mineralogy of some foraminifera as related to their classification and ecology. *J Paleont* 33:1-15
- Borowitzka MA, Larkum AWD, Nockolds CE (1974) A scanning electron microscope study of the structure and organization of the calcium carbonate deposits of algae. *Phycologia* 13:195-203
- Borowitzka MA (1982) Morphological and cytological aspects of algal calcification. *Intl Rev Cytology* 74:127-160
- Bouropoulos N, Weiner S, Addadi L (2001) Calcium oxalate crystals in tobacco and tomato plants: morphology and *in vitro* interactions of crystal-associated macromolecules. *Chem Eur J* 7:1881-1888
- Brown SJ, Elderfield H (1996) Variations in Mg/Ca and Sr/Ca ratios of the planktonic foraminifera caused by postdepositional dissolution: evidence of shallow Mg-dependent dissolution. *Paleoceanography* 11:543-551
- Brownlee C, Nimer N, Dong LF, Merrett MJ (1994) Cellular regulation during calcification in *Emiliana huxleyi*. In: *The Haptophyte Algae*, Vol 51. Green JC, Leadbeater BSC (eds) Clarendon Press, New York, p 133-148
- Carpenter SJ, Lohmann KC (1995) $\delta^{18}\text{O}$ and $\delta^{13}\text{C}$ values of modern brachiopod shells. *Geochim Cosmochim Acta* 59:3749-3764
- Chave KE (1954) Aspects of the biogeochemistry of magnesium I. Calcareous marine organisms. *J Geol* 62:266-283
- Cohen A, McConnaughey T (2003) Geochemical perspectives on coral mineralization. *Rev Mineral Geochem* 54:151-187
- Cohen AL, Owens KE, Layne GD, Shimizu N (2002) The effect of algal symbiosis on the accuracy of Sr/Ca paleotemperatures from coral. *Science* 296(5566):331-333
- Constantz BR (1986) Coral skeleton construction: A physiochemically dominated process. *Palaiois* 1:152-157
- Constantz BR, Meike A (1989) Calcite centers of calcification in *Mussa Angulosa* (Scleractinia). In: *Origin, Evolution and Modern Aspects of Biomineralization in Plants and Animals*. Crick RE (ed) Elsevier, Amsterdam, p 201-207
- Craig H (1953) The geochemistry of the stable carbon isotopes. *Geochim Cosmochim Acta* 3:53-92
- Crenshaw MA (1972) The inorganic composition of molluscan extrapallial fluid. *Biol Bull* 143:506-512
- Crenshaw MA (1980) Mechanisms of shell formation and dissolution. In: *Skeletal Growth of Aquatic Organisms*. Rhoads DC, Lutz RA (eds) Plenum Publishing Corporation, New York, p 115-132
- Crick RE (ed) (1989) *Origin, Evolution, and Modern Aspects of Biomineralization in Plants and Animals*. 5th Intl Symposium on Biomineralization 1986. Plenum Press, New York
- da Silva JJRF, Williams RJP (1991) *The Biological Chemistry of the Elements*. Oxford University Press, New York
- De Vrind-De Jong EW, Van Emburg PR, De Vrind JPM (1994) Mechanisms of calcification: *Emiliana huxleyi* as a model system. In: *The Haptophyte Algae*. Vol 51. Green JC, Leadbeater BSC (eds) Clarendon Press, New York, p 149-166
- De Vrind-De Jong EW, De Vrind JPM (1997) Algal deposition of carbonates and silicates. *Rev Mineral* 35:267-307
- De Yoreo, JJ, Vekilov PG (2003) Principles of crystal nucleation and growth. *Rev Mineral Geochem* 54:57-93
- Deer WA, Howie RA, Zussman J (1966) *An Introduction to the Rock-Forming Minerals*. Longman, Essex, England
- Duckworth DL (1977) Magnesium concentration in the tests of the planktonic foraminifer *Globorotalia truncatulinoides*. *J Foraminiferal Res* 7:304-312
- Duplessy J-C, Lalou C, Vinot AC (1970) Differential isotopic fractionation in benthic foraminifera and paleotemperatures reassessed. *Science* 168:250-251
- Elderfield H, Bertram CJ, Erez J (1996) A biomineralization model for the incorporation of trace elements into foraminiferal calcium carbonate. *Earth Planet Sci Lett* 142:409-423
- Epstein S, Buchsbaum R, Lowenstam HA, Urey HC (1951) Carbonate-water isotopic temperature scale. *Bull Geol Soc Am* 62:417-426
- Epstein S, Buchsbaum R, Lowenstam HA, Urey HC (1953) Revised carbonate-water isotopic temperature scale. *Bull Geol Soc Am* 64:1315-1326

- Epstein S, Lowenstam HA (1954) Temperature-shell-growth relations of recent and interglacial Pleistocene shoal-water biota from Bermuda. *J Geol* 61(5):424-438
- Erez J (1978) Vital effect on stable-isotope composition seen in foraminifera and coral skeletons. *Nature* 273:199-202
- Erez J, Luz B (1983) Experimental paleotemperature equation for planktonic foraminifera. *Geochim Cosmochim Acta* 47:1025-1031
- Erez J (2003) The source of ions for biomineralization in foraminifera and their implications for paleoceanographic proxies. *Rev Mineral Geochem* 54:115-149
- Evans J (2003) Principles of molecular biology and biomacromolecular chemistry. *Rev Mineral Geochem* 54:31-56
- Falini G, Albeck S, Weiner S, Addadi L (1996) Control of aragonite or calcite polymorphism by mollusk shell macromolecules. *Science* 271:67-69
- Fortin D, Ferris FG, Beveridge TJ (1997) Surface-mediated mineral development by bacteria. *Rev Mineral* 35:161-180
- Frankel RB, Bazylinski DA (2003) Biologically induced mineralization by bacteria. *Rev Mineral Geochem* 54:95-114
- Garrone R, Simpson TL, Pottu-Boumendil J (1981) Ultrastructure and deposition of silica in sponges. *In: Silicon and Siliceous Structures in Biological Systems*. Simpson TL, Volcani BE (eds) Springer-Verlag, New York, p 495-525
- Gay CV, Mueller WJ (1973) Cellular localization of carbonic anhydrase in avian tissues by labeled inhibitor autoradiography. *J Histochem Cytochem* 21:693-702
- Goreau TF (1959) The physiology of skeletal formation in corals. I. A method for measuring the rate of formation of calcium deposition of corals under different conditions. *Biol Bull* 116:59-75
- Gottliv B-A, Addadi L, Weiner S (2003) Mollusk shell acidic proteins: in search of individual functions. *Chem Bio Chem* 4:522-529
- Grégoire C, Duchateau GH, Florkin M (1955) La trame protidique des nacrés et des perles. *Ann Inst Oceanogr Monaco* 31:1-36
- Hemleben C, Anderson OR, Berthold W, Spindler M (1986) Calcification and chamber formation in foraminifera—a brief overview. *In: Biomineralization in Lower Plants and Animals*. Leadbeater BSC, Riding R (eds) Clarendon Press, Oxford, p 237-249
- Iler RK (1979) *The Chemistry of Silica*. John Wiley & Sons, New York
- Ip YK, Lim ALL, Lim RWL (1991) Some properties of calcium-activated adenosine triphosphatase from the hermatypic coral *Galaxea fascicularis*. *Mar Biol* 111:191-197
- Kingsley R, Watabe N (1987) Role of carbonic anhydrase in calcification in the gorgonian *Leptogorgia virgulata* (Lamarck) (Coelenterata: Gorgonacea). *J Exp Mar Biol Ecol* 93:157-167
- Kirschvink JL, Hagadorn JW (2000) A grand unified theory of biomineralization. *In: Biomineralization*. Bäuerlein E (ed) Wiley-VCH Verlag GmbH, Weinheim, Germany, p 139-149
- Knoll A (2003) Biomineralization and evolutionary history. *Rev Mineral Geochem* 54:329-356
- Konhäuser KO (1997) Bacterial iron biomineralisation in nature. *FEMS Microbiol Rev* 20:315-326
- Konhäuser KO (1998) Diversity of bacterial iron mineralization. *Earth-Science Rev* 43:91-121
- Kröger N, Deutzmann R, Sumper M (1999) Polycationic peptides from diatom biosilica that direct silica nanosphere formation. *Science* 286:1129-1132
- Kröger N, Lorenz S, Brunner E, Sumper M (2002) Self-assembly of highly phosphorylated silaffins and their function in biosilica morphogenesis. *Science* 298:584-586
- Land LS, Lang JC, Barnes DJ (1975) Extension rate: a primary control on the isotopic composition of the West Indian (Jamaican) scleractinian reef coral skeletons. *Mar Biol* 33:221-233
- Langmuir D (1997) *Aqueous Environmental Geochemistry*. Prentice-Hall, Inc., Upper Saddle River, NJ
- Leadbeater BSC, Riding R (eds) (1986) *Biomineralization in Lower Plants and Animals*. The Systematics Association Special Volume. Clarendon Press, Oxford
- Legeros R, Balmain N, Bonel G (1987) Age-related changes in mineral of rat and bovine cortical bone. *Calc Tissue Intl* 41:137-144
- Letizia ML, Moscariello A, Hunziker J (1997) Stable isotopes in Lake Geneva carbonate sediments and molluscs: review and new data. *Eclog Geol Helv* 90:199-210
- Levi-Kalisman Y, Addadi L, Weiner S (2001) Structure of the nacreous organic matrix of a bivalve mollusk shell examined in the hydrated state using cryo-TEM. *J Struct Biol* 135:8-17
- Levi-Kalisman Y, Raz S, Weiner S, Addadi L, Sagi I (2002) Structural differences between biogenic amorphous calcium carbonate phases using x-ray absorption spectroscopy. *Advanced Functional Mat* 12(1):43-48
- Lowenstam HA (1954) Factors affecting the aragonite:calcite ratios in carbonate-secreting marine organisms. *J Geol* 62:284-322

- Lowenstam HA (1963) Biological problems relating to the composition and diagenesis of sediments. *In: The Earth Sciences: Problems and Progress in Current Research*. Donnelly TW (ed) University of Chicago Press, Chicago, p 137-195
- Lowenstam HA (1964) Sr/Ca ratio of skeletal aragonites from the recent marine biota at Palau and from fossil gastropods. *In: Isotopic and Cosmic Chemistry*. Craig H, Miller SL, Wasserburg GJ (eds), North Holland Publishing Co, Amsterdam, p 114-132
- Lowenstam HA (1981) Minerals formed by organisms. *Science* 211:1126-1131
- Lowenstam HA (1986) Mineralization processes in monerans and protoctists. *In: Biomineralization in Lower Plants and Animals*. Vol 30. Leadbeater BSC, Riding R (eds) Oxford University Press, New York, p 1-17
- Lowenstam HA, Margulis L (1980) Calcium regulation and the appearance of calcareous skeletons in the fossil record. *In: The Mechanisms of Biomineralization in Animals and Plants*. Omori M, Watabe N (eds) Tokai University Press, Tokyo, p 289-300
- Lowenstam HA, Rossman GR (1975) Amorphous, hydrous, ferric phosphatic dermal granules in *Molpadia* (Holothurridae): Physical and chemical characterization and ecologic implications of the bioinorganic fraction. *Chem Geol* 15:15-51.
- Lowenstam HA, Weiner S (1989) *On Biomineralization*. Oxford University Press, New York
- Mann S (1983) Mineralization in biological systems. *Struct Bonding* 54:125-174
- Mann S (2001) *Biomineralization: Principles and Concepts in Bioinorganic Materials Chemistry*. Oxford University Press, New York
- Markel K (1986) Ultrastructural investigation of matrix-mediated biomineralization in echinoids (Echinodermata, Echinoidea). *Zoomorphology* 106:232-243
- McConnaughey T (1989a) ^{13}C and ^{18}O isotopic disequilibrium in biological carbonates: I. Patterns. *Geochim Cosmochim Acta* 53:151-162
- McConnaughey T (1989b) Biomineralization mechanisms. *In: Origin, Evolution, and Modern Aspects of Biomineralization in Plants and Animals*. Crick RE (ed) Plenum, New York, p 57-73
- McCreath JM (1950) On the isotopic chemistry of carbonates and a paleotemperature scale. *J Chem Phys* 18:849-857
- Minsky A, Shimoni E, Frenkel-Krispin D (2002) Stress, order and survival. *Nature Rev Mol Cell Biology* 3:50-60
- Miyamoto H, Miyashita T, Okushima M, Nakano S, Morita T, Matsushiro A (1996) A carbonic anhydrase from the nacreous layer in oyster pearls. *Proc Natl Acad Sci USA* 93(18):9657-60
- Moradian-Oldak J, Weiner S, Addadi L, Landis WJ, Traub W (1990) Electron diffraction study of individual crystals of bone, mineralized tendon and synthetic carbonate apatite. *Conn Tissue Res* 25:1-10
- Nancollas GH (ed) (1982) *Biological Mineralization and Demineralization*. Life Sciences Research Report, Springer-Verlag, New York
- Noll F, Sumper M, Hampp N (2002) Nanostructure of diatom silica surfaces and of biomimetic analogues. *Nano Letters* 2(2):91-95
- Orme CA, Noy A, Wierzbicki A, McBride MT, Grantham M, Teng HH, Dove PM, DeYoreo JJ (2001) Formation of chiral morphologies through selective binding of amino acids to calcite surface steps. *Nature* 411:775-779
- Pereira-Mouriès L, Almeida M-J, Ribeiro C, Peduzzi J, Barthélemy M, Milet C, Lopez E (2002) Soluble silk-like organic matrix in the nacreous layer of the bivalve *Pinctada maxima*. *European J Biochem* 269:4994-5003
- Perry CC (2003) Silicification: the processes by which organisms capture and mineralize silica. *Rev Mineral Geochem* 54:291-327
- Pohnert G (2002) Biomineralization in diatoms mediated through peptide- and polyamine-assisted condensation of silica. *Angew Chem Intl E* 41(17):3167-3169
- Raven JA, Griffiths H, Glidewell SM, Preston T (1982) The mechanism of oxalate biosynthesis in higher plants: Investigating with the stable isotopes ^{18}O and ^{13}C . *Proc R Soc London B, Biol Sci* 216:87-101
- Raz S, Hamilton P, Wilt F, Weiner S, Addadi L (2003) Proteins from sea urchin larval spicules mediate the transient formation of amorphous calcium carbonate on the way to calcite (to be submitted)
- Raz S, Weiner S, Addadi L (2000) The formation of high magnesium calcite via a transient amorphous colloid phase. *Adv Mater* 12:38-42
- Rucker JB, Carver RE (1969) A survey of the carbonate mineralogy of cheilostome bryozoa. *J Paleont* 43:791-799
- Sarashina I, Endo K (1998) Primary structure of a soluble matrix protein of scallop shell: implications for calcium carbonate biomineralization. *Am Mineral* 83:1510-1515
- Schlüter M, Rickert D (1998) Effect of pH on the measurement of biogenic silica. *Mar Chem* 63:81-92
- Schmidt WJ (1924) *Die Bausteine des Tierkörpers in Polarisierendem Lichte*. F. Cohen Verlag, Bonn
- Schrag DP, Linsley BK (2002) Corals, chemistry, and climate. *Science* 296:277-278

- Schtler D, Frankel RB (1999) Bacterial magnetosomes: Microbiology, biomineralization and biotechnological applications. *Applied Microbiol Biotech* 52:464-473
- Simkiss K (1976) Cellular aspects of calcification. *In: The Mechanisms of Mineralization in the Invertebrates and Plants*. Vol 5. Watabe N, Wilbur KM (eds) Univ. of South Carolina Press, Columbia, SC, p 1-31
- Simkiss K (1986) The processes of biomineralization in lower plants and animals-an overview. *In: Biomineralization in Lower Plants and Animals*. Vol 30. Leadbeater BSC, Riding R (eds) Oxford University Press, NY, p 19-37
- Simkiss K, Wilbur K (1989) *Biomineralization. Cell Biology and Mineral Deposition*. Academic Press, Inc., San Diego
- Skinner HCW, Jahren AH (2003) *Biomineralization. Biogeochemistry: Treatise on Geochemistry*. W. H. Schlesinger, Elsevier Science. 8: (in press)
- Spiro BF (1971) Diagenesis of some scleractinian corals from the Gulf of Elat, Israel. *Bull Geol Soc Denmark* 21:1-10
- Stumm W (1992) *Chemistry of the Solid-Water Interface*. John Wiley & Sons Inc, New York
- Sumper M (2002) A phase separation model for the nanopatterning of diatom biosilica. *Science* 295:2430-2433
- Swift DM, Wheeler AP (1991) Some structural and functional properties of a possible organic matrix from the frustules of the freshwater diatom *Cyclotella meneghiniana*. *In: Surface Reactive Peptides and Polymers*. Vol 444. Sikes CS, Wheeler AP (eds) American Chemical Society, Washington, DC, p 340-353
- Swift DM, Wheeler AP (1992) Evidence of an organic matrix from diatom biosilica. *J Phycol* 28:202-209
- Tebo BM, Ghiorse WC, van Waasbergen LG, Siering PL, Caspi R (1997). Bacterially mediated mineral formation: Insights into manganese(II) oxidation from molecular genetic and biochemical studies. *Rev Mineral* 35:225-266
- Towe KM, Cifelli R (1967) Wall ultrastructure in the calcareous foraminifera: Crystallographic aspects and a model for calcification. *J Paleontol* 41:742-762
- Treves K, Traub W, Weiner S, Addadi L (2003) Aragonite formation in the chiton (Mollusca) girdle. *Helv Chim Acta* 86:1101-1112
- Urey HC, Lowenstam HA, Epstein S, McKinney CR (1951) Measurement of paleotemperatures and temperatures of the Upper Cretaceous of England, Denmark, and the southeastern United States. *Bull Geol Soc Am* 62:399-416
- Van Cappellen P (2003) Biomineralization and global biogeochemical cycles. *Rev Mineral Geochem* 54:357-381
- Weis A, Perry CC (1967) The phosphoprotein of the dentin matrix. *Biochemistry* 6:2409-2416
- Weis A (2003) Mineralization in organic matrix frameworks. *Rev Mineral Geochem* 54:249-289
- Vrieling EG, Beelen TPM, van Santen RA, Gieskes WWC (2002) Mesophases of (bio)polymer-silica particles inspire a model for silica biomineralization in diatoms. *Angew Chem Intl Ed* 41(9):1543-1546
- Wada K, Fujinuki T (1974) Biomineralization in bivalve molluscs with emphasis on the chemical composition of the extrapallial fluid. *In: The Mechanisms of Mineralization in the Invertebrates and Plants*. Vol 5. Watabe N, Wilbur KM (eds) Univ of SC Press, Columbia, SC, p 175-188
- Watabe N, Kingsley RJ (1989) Extra-, inter-, and intracellular mineralization in invertebrates and algae. *In: Origin, Evolution, and Modern Aspects of Biomineralization in Plants and Animals*. Crick RE (ed) Plenum, New York, p 209-223
- Waychunas GA (2001) Structure, aggregation and characterization of nanoparticles. *Rev Mineral Geochem* 44:105-166
- Webb MA (1999) Cell-mediated crystallization of calcium oxalate in plants. *Plant Cell* 11:751-761
- Weber JN, Raup DM (1966) Fractionation of the stable isotopes of carbon and oxygen in marine calcareous organisms—the Echinoidea. Part II. Environmental and genetic factors. *Geochim Cosmochim Acta* 30:705-736
- Weber JN, Woodhead PM (1970) Carbon and oxygen isotope fractionation in the skeletal carbonate of reef-building corals. *Chem Geol* 6:93-117
- Weiner S (1979) Aspartic acid-rich proteins: major components of the soluble organic matrix of mollusk shells. *Calc Tissue Intl* 29:163-167
- Weiner S, Addadi L (1991) Acidic macromolecules of mineralized tissues: The controllers of crystal formation. *Trends Biol Sc* 16(7)
- Weiner S, Addadi L (2002) At the cutting edge. *Perspectives. Science* 298:375-376
- Weiner S, Price P (1986) Disaggregation of bone into crystals. *Calcif Tissue Intl* 39:365-375
- Weiner S, Talmon Y, Traub W (1983a) Electron diffraction of mollusk shell organic matrices and their relationship to the mineral phase. *Intl J Biol Macromol* 5:325-328

- Weiner S, Traub W (1980) X-ray diffraction study of the insoluble organic matrix of mollusk shells. *FEBS Letters* 111(2):311-316
- Weiner S, Traub W, Lowenstam HA (1983) Organic matrix in calcified exoskeletons, D. Reidel Publishing Co, Dordrecht, Holland
- Weiner S, Traub W (1984) Macromolecules in mollusk shells and their functions in biomineralization. *Phil Trans R Soc London Ser. B* 304:421-438
- Weiner S, Traub W, Lowenstam HA (1983b) Organic matrix in calcified exoskeletons. *In: Biomineralization and Biological Metal Accumulation*. Westbrook P, de Jong EW (eds) Reidel Publishing Co, Dordrecht, Holland p 205-224
- Weiner S, Wagner HD (1998) The material bone: Structure-mechanical function relations. *Annual Rev Mat Sci* 28:271-298
- Weiss IM, Tuross N, Addadi L, Weiner S (2002) Mollusk larval shell formation: amorphous calcium carbonate is a precursor for aragonite. *J Exp Zool* 293:478-491
- Westbroek P (1983) Biological metal accumulation and biomineralization in a geological perspective. *In: Biomineralization and Biological Metal Accumulation*. Westbrook P, de Jong EW (eds) D. Reidel Publishing Co, Dordrecht, Holland, p 1-11
- Wheeler AP, George JW, Evans CR (1981) Control of calcium carbonate nucleation and crystal growth by soluble matrix of oyster shell. *Science* 212:1397-1398
- Wilt FH (1999) Matrix and mineral in the sea urchin larval skeleton. *J Struct Biol* 126:216-226
- Wilt FH (2002) Biomineralization of the spicules of sea urchin embryos. *Zool Sci* 19:253-261
- Worms D, Weiner S (1986) Mollusk shell organic matrix: Fourier transform infrared study of the acidic macromolecules. *J Exp Zool* 237:11-20
- Young JR, Davis SA, Brown PR, Mann S (1999) Coccolith ultrastructure and biomineralization. *J Struct Biol* 126:195-215
- Young JR, Henriksen K (2003) Biomineralization within vesicles: the calcite of coccoliths. *Rev Mineral Geochem* 54:189-215
- Zaremba CM, Belcher AM, Fritz M, Li Y, Mann S, Hansma PK, Morse DE, Speck JS, Stucky GD (1996) Critical transitions in the biofabrication of abalone shells and flat pearls. *Chem Mat* 8:679-690
- Zeebe RE, Sanyal A (2002) Comparison of two potential strategies of planktonic foraminifera for house building: Mg^{2+} or H^+ removal? *Geochim Cosmochim Acta* 66(7):1159-1169
- Ziveri P, Stoll H, Probert I, Klaas C, Geisen M, Ganssen G, Young J (2003) Stable isotope "vital effects" in coccolith calcite. *Earth Planet Sci Lett* 210:137-149